

SPARE PARTS SECTION

THICKNESSER

Model T-13S

ORDER CODE W815

Edition No : TH-815-2

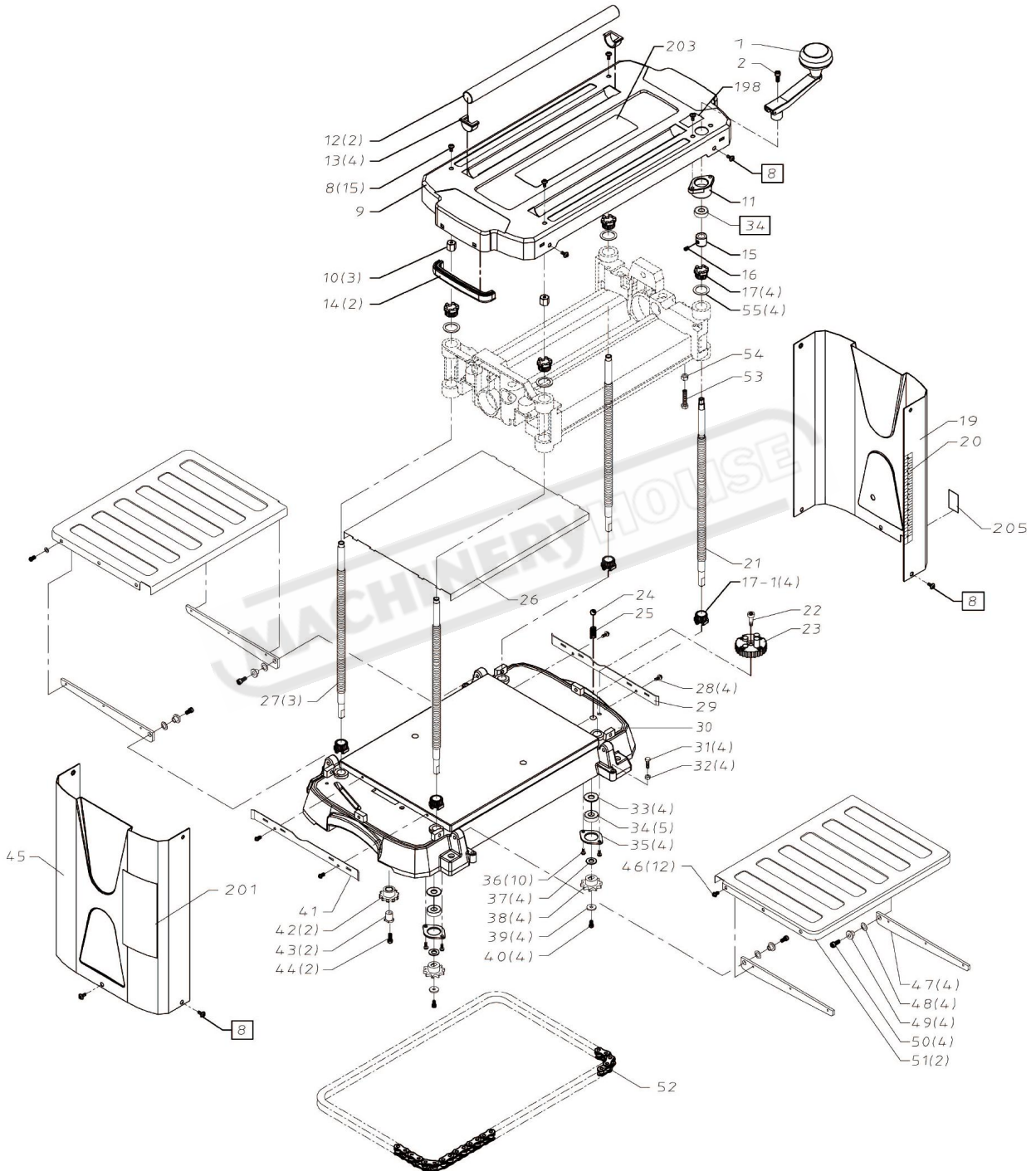
Date of Issue : 04/2020

The following section covers the spare parts diagrams and lists that were current at the time this manual was originally printed. Due to continuous improvements of the machine, changes may be made at any time without notification.

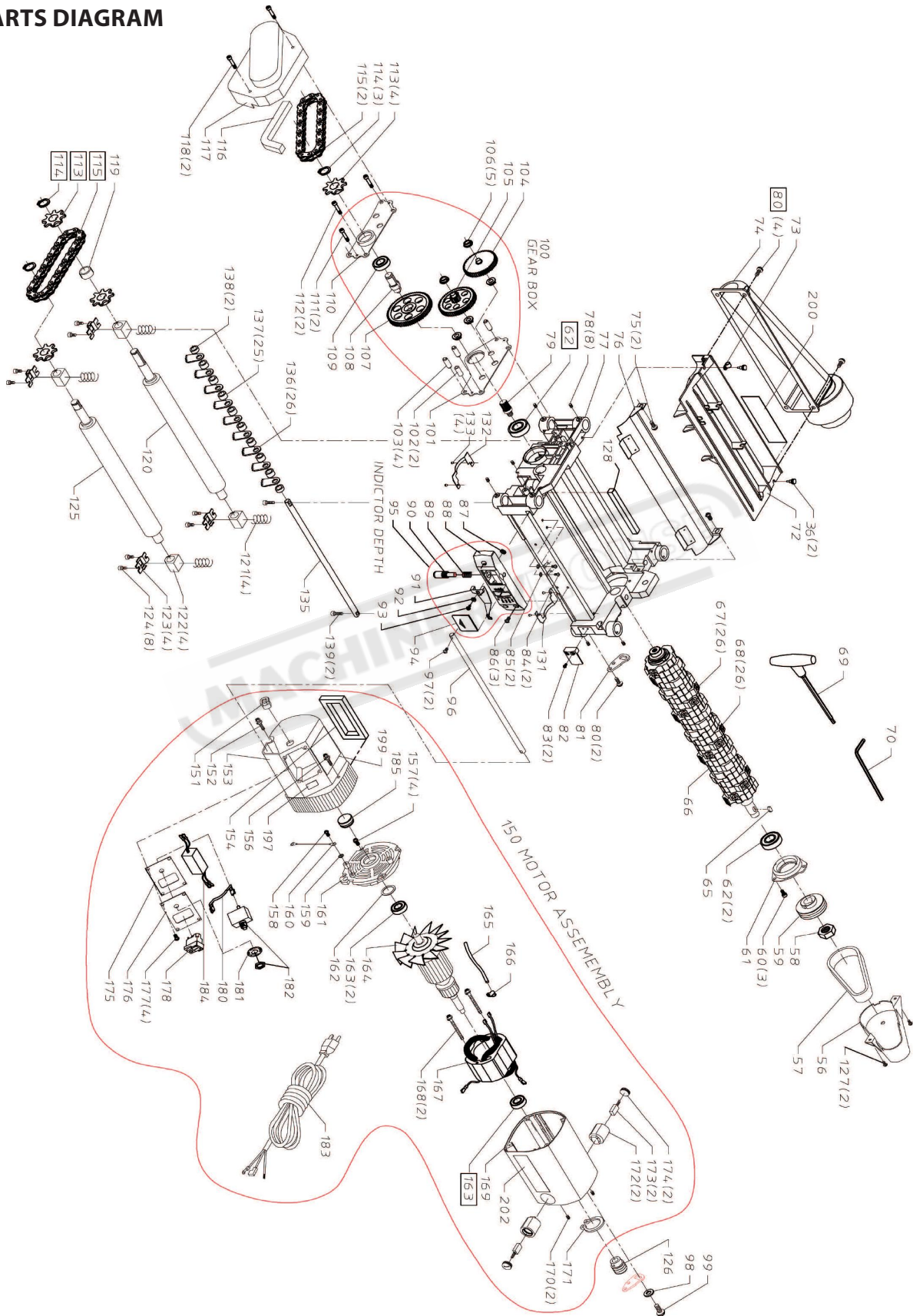
HOW TO ORDER SPARE PARTS

1. Have your machines **model number, serial number & date of manufacture** on hand, these can be found on the specification plate mounted on the machine
2. A scanned copy of your parts list/diagram with required spare part/s identified
3. Go to www.machineryhouse.com.au/contactus and fill out the enquiry form attaching a copy of scanned parts list.

PARTS DIAGRAM



PARTS DIAGRAM



OPERATION MANUAL

PARTS LIST

ITEM	DESCRIPTION	QTY.	ITEM	DESCRIPTION	QTY.
1	HANDLE ASSEMBLY	1	49	TABLE BUSHING	4
2	M5XP0.8X20L HEX SOC HD SCR	1	50	M6XP1.0X16L PAN HD SCR	4
3	SPINDLE LEVER KNUCKLE	1	51	IN-FEED / OUT-FEED TABLE	2
4-1	HAND KNOB UPPER	1	52	ROLLER CHAIN	1
4-2	HAND KNOB LOWER	1	53	M8XP1.25X45L HEX HD SCREW	1
5	SCREW	1	54	M8XP1.25 HEX NUT	1
6	PLATE	1	55	FLAT WASHER	4
7	SPRING PIN	1	56	BELT GUARD	1
8	M6XP1.0X8L HEX SOC HD CAP SCR	15	57	BELT	1
9	TOP COVER	1	58	M16XP2.0 L.H. HEX NUT	1
10	SHAFT BUSHING	3	59	CUTTERHEAD DRIVE PULLEY	1
11	UPPER BEARING SEAT	1	60	M5XP0.8X12L HEX SOC HD SCR	3
12	ROLLER TUBE	2	61	CUTTERHEAD BEARING CUP	1
13	ROLLER TUBE SEAT	4	62	CUTTERHEAD BEARING (6203ZZ)	2
14	HANDLE BAR	2	63	BEARING RETAINER	1
15	SPACER	1	64	M3XP0.5X8L PAN HD SELF TAP SCR	2
16	M5XP0.8X5L NYLOCK SCR SOC CUP PT	1	65	5X5X12MM KEY	1
17	ELEVATION NUT UPPER	4	66	SPIRAL CUTTERHEAD	1
17-1	ELEVATION NUT LOWER	4	67	SPIRAL CUTTERHEAD TIPS	26
19	RIGHT SIDE COVER	1	68	M5XP0.8 TIPS TORX SCREW	26
20	SCALE	1	69	TORX WRENCH	1
21	HEIGHT ADJ SPINDLE	1	70	HEX WRENCH	1
22	M6XP1.0 SPECIAL BOLT	1	72	DUST CHUTE	1
23	TURNING TRAY	1	73	POWER CORD CLAMP	1
24	STEEL BALL	1	74	ADAPTER	1
25	COIL SPRING	1	75	M6XP1.0X10L HEX SOC HD CAP SCR	2
26	WEAR PLATE	1	76	DEFLECTOR	1
27	SPINDLE	3	77	UPPER FRAME	1
28	M4XP0.7X10L PAN HD SCR	4	78	M5XP0.8X6L CONE SET SCR	8
29	BASE GUIDE RAIL RIGHT	1	79	CUTTERHEAD PINION GEAR	1
30	BASE	1	80	M6XP1.0X12L HEX SOC HD CAP SCR	6
31	M6XP1.0X20L HEX HD SCREW	4	81	MOTOR MTG PLATE	1
32	M6XP1.0 HEX NUT	4	82	CURSOR	1
33	FLAT WASHER	4	83	M3XP0.5X16L ROUND HD SCR	2
34	SPINDLE BEARINGS (6000ZZ)	5	84	M5XP0.8X8L PAN HD SCR L/WASH	2
35	BASE BEARING RETAINER	4	85	EXT TOOTH WASHER	2
36	M5XP0.8X12L HEX SOC HD CAP SCR	10	86	M4XP0.7X12L PAN HD SCR	3
37	FLAT WASHER	4	87	SPECIAL NUT	1
38	SPINDLE SPROCKET	4	88	POINTER HOUSING	1
39	FLAT WASHER	4	89	COIL SPRING	1
40	M4XP0.7X12L NYLOCK HEX SOC HD SCR	4	90	ROD POINTER ELEVATING	1
41	BASE GUIDE RAIL LEFT	1	91	POINTER	1
42	IDLE WHEEL	2	92	BUSHING	1
43	IDLE WHEEL SHAFT	2	93	M4XP0.7X10L NYLOCK SCR W/WASH	1
44	M5XP0.8X25L HEX SOC HD SCR	2	94	POINTER HOUSING	1
45	LEFT SIDE COVER	1	95	INDICATOR DEPTH ASSY	1
46	M4XP0.7X6L PAN HD SCR W/WASH	12	96	MOTOR PIVOT ROD	1
47	TABLE SUPPORT	4	97	M5XP0.8X16L HEX SOC HD CAP SCR	2
48	SPRING WASHER	4	98	FLAT WASHER	1

OPERATION MANUAL

PARTS LIST

ITEM	DESCRIPTION	QTY.	ITEM	DESCRIPTION	QTY.
99	M8XP1.25X20L HEX SOC HD CAP SCR	1	161	MOTOR END CAP	1
100	GEARBOX ASSY	1	162	WAVE WASHER	1
101	REAR GEARBOX PLATE	1	163	BALL BEARING	2
102	SPACER A	2	164	ARMATURE	1
103	SPACER B	4	165	SLEEVE	1
104	GEAR-SMALL	1	166	POWER CORD CLAMP	1
104A	GEAR SHAFT	2	167	FIELD	1
105	GEAR-INTERMEDIATE	1	168	M4.8X75L TAP SCR PAN HD L/WASH	2
106	BUSHING	5	169	MOTOR HOUSING	1
107	GEAR-LARGER	1	170	M5XP0.8X8MM HEX SOC SET SCR	2
108	GEAR SHAFT	1	171	RING RETAINING	1
109	BEARING (6002ZZ)	1	172	BRUSH HOLDER	2
110	FRONT GEARBOX PLATE	1	173	BRUSH	2
111	M5XP0.8X27L HEX SOC HD SCR	2	174	BRUSH CAP	2
112	M5XP0.8X35L HEX SOC HD SCR	2	175	INSULATOR	1
113	SPROCKET	4	175-1	SWITCH FIXED PLATE	1
114	RING-EXT RET	3	176	SWITCH COVER	1
115	GEARBOX DRIVE CHAIN	2	177	PAN HD TAP SCREW	4
116	CUSHION	1	178	MAGNETIC SWITCH	1
117	GEARBOX GUARD	1	180	CONNECT WIRE	1
118	M5XP0.8X45L HEX SOC HD SCR	2	181	NAME PLATE	1
119	SPROCKET SPACER	1	182	SWITCH RESET	1
120	OUTFEED ROLLER	1	183	POWER CORD	1
121	SPRING	4	183-1	POWER CORD BAG	1
122	BEARING BLOCK	4	184	WAVE FILTER	1
123	BEARING BLOCK RETAINER	4	185	PLUG	1
124	M5XP0.8X10L HEX SOC HD SCR	8	197	ON/OFF LEAEL	1
125	INFEED ROLLER	1	198	ELEVATION INDICATE LEAEL	1
126	MOTOR PULLEY	1	199	NAMEPLATE LEAEL	1
127	M4XP0.7X10L PAN HD SCR W/WASH	2	200	BLADE CHANGE LEAEL	1
128	CUSHION	1	201	WARNING LEAEL	1
131	RIGHT BOTTOM COVER	1	202	LOGO LEAEL	1
132	LEFT BOTTOM COVER	1	203	TOP COVER LOGO LEAEL	1
133	LABEL RIVET	4	204	REP CUT INDICATE LEAEL	1
135	BAR	1			
136	ANTI-KICK JAW	26			
137	SPACER	25			
138	SPACER	2			
139	M5XP0.8X20L HEX SOC HD SCR	2			
150	MOTOR ASSY	1			
151	STRAIN RELIEF BUSHING	1			
152	M5XP0.8X16L PAN HD SCREW L/WASH	1			
153	AIR CHAMBER(MOTOR)	1			
154	CUSHION	1			
156	M5XP0.8X35L PAN HD SCREW W/LOCK	1			
157	M4.2XP1.7X20L TAPING SCR L/WASH	4			
158	M5XP0.8X8L SCR PAN HD CR TYTT	1			
159	LOCKWASHER EXT	1			
160	GROUND WIRE	1			